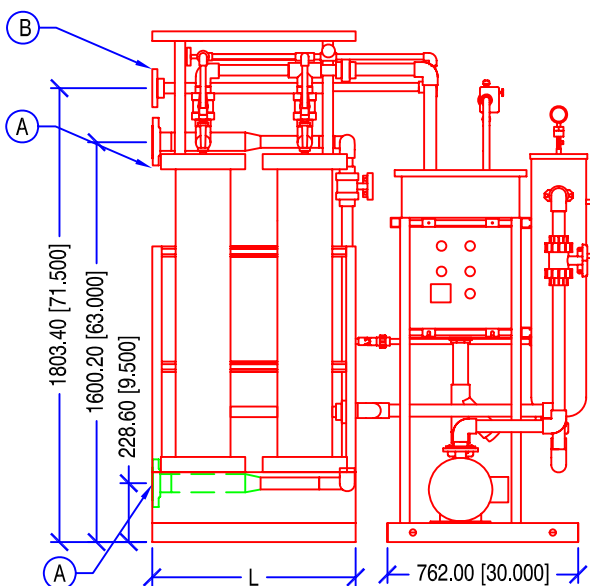
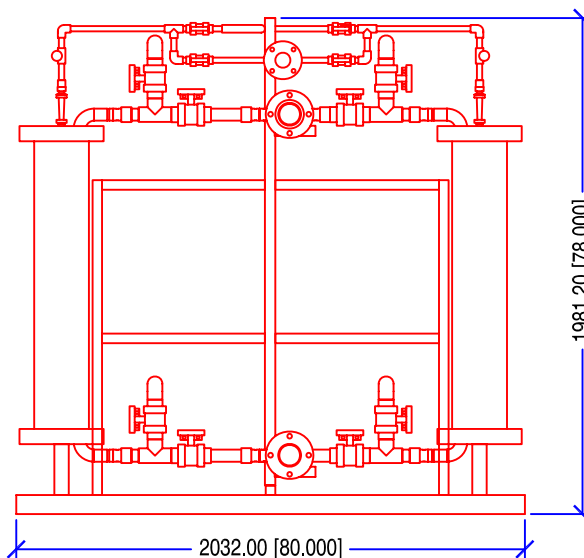


Number of 8" Modules	Permeate Rate (gpm) per 8" Module			A	B	L
	-10%	STD	10%			
	2.25	2.5	2.75	(inches)	(inches)	(inches)
4	9.00	10.00	11.00	3	2	32
6	13.50	15.00	16.50	4	2	48
8	18.00	20.00	22.00	6	2	64
10	22.50	25.00	27.50	6	2	80
12	27.00	30.00	33.00	8	2	96
14	31.50	35.00	38.50	8	2	112
16	36.00	40.00	44.00	8	2	128
18	40.50	45.00	49.50	8	2	144



Front View

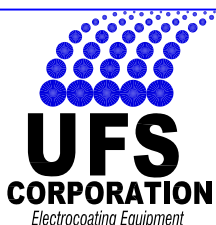


Side View

(CIP not Shown for Clarity)

Double Sided TruFlux UF Machine

Please Note: Some piping has been removed in some views for clarity. Drawing accuracy is +/- 12.70 [0.500]
Some Dimensions may change during construction and final design phase.



Tel: +219-464-2027
Fax: +219-464-8646

Designed By: JD
Date: 9/17/03

Visit us on the Web at
www.ufsc.com

Approved By:
Date:

TrufluxUF5x8", DBL, CIP, Proposal

UFS Part No. 770903

Sheet:	1/1
Revision:	0
Units:	mm
Scale:	None

THIS MATERIAL IS THE CONFIDENTIAL PROPERTY OF UFS CORPORATION AND SHOULD NOT BE USED IN ANY WAY DETRIMENTAL TO THE CORPORATION'S INTEREST. MATERIAL SHOULD NOT BE COPIED OR REPRODUCED IN PART OR IN WHOLE, AND INFORMATION FROM IT SHALL NOT BE FURNISHED TO OTHERS WITHOUT WRITTEN PERMISSION. ALL RIGHTS OF DESIGN AND INVENTION ARE RESERVED BY UFS CORPORATION. MATERIAL TO BE RETURNED UPON REQUEST.